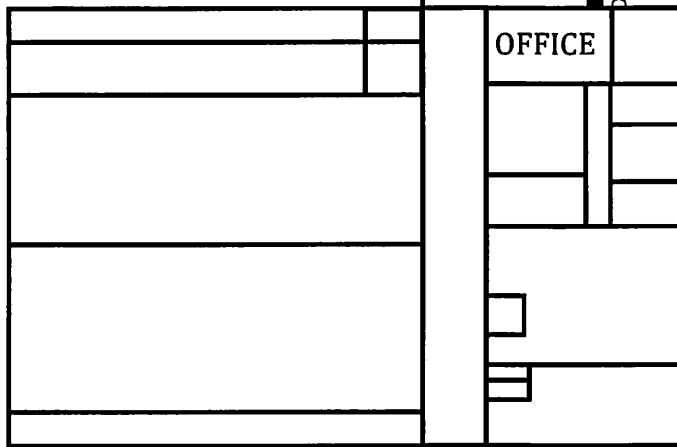
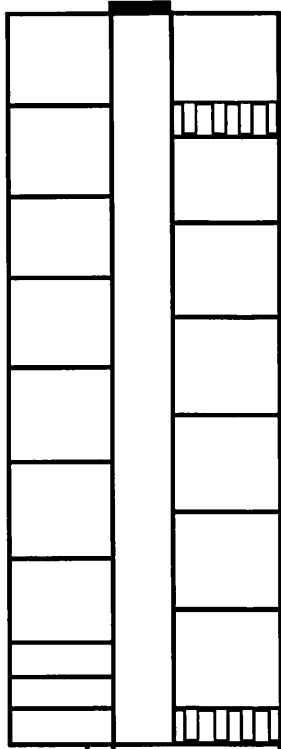
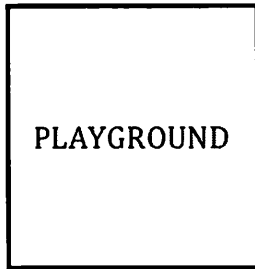
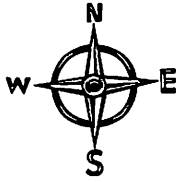


MISSISSIPPI ELEMENTARY



Garage

FLORA STREET

CROOKED LAKE BLVD.

**Bus Loop
Buses Only***
8:45-9:15am
3:25-3:55pm

*Cars may not use
the bus loop at these
times, please.

*Handicapped
parking/access permitted
in the bus loop at all
times.

NO Parking Here!

Student Drop Off Area

NEW:
Do not park
on Flora St.
Do not walk
child
through
driveway.

SOUTH LOT:
Please follow arrows and
drop off/pick up students
along sidewalks. Cars must
wait in a single file line.
For student safety,
students are not allowed
to cross the lot without a
parent.
Drop off: 9:00-9:15am
Pick up: 3:45-3:55pm

Student Drop Off Area

**Bus Loop
Buses Only***
8:45-9:15am
3:25-3:55pm

DIRECT RIVER DRIVE

SIGN

Building Security and Student Arrival/Dismissal

Goal: All students start and end their day on time, safe and supported by adults.

Building Security Procedures

During the school day, visitors will need to go to door #1 on the east side of the building, press the green call button in the entry, swipe their state identification, take the printed visitor badge and wait to be "buzzed" into the building.

Student Arrival

- All students may enter the building at 9:00AM and proceed to breakfast or their classroom.
- **Bus Drop Off:** Bus companies are scheduled to drop off at 9:00AM. Students will be released at 9:00AM from their buses.
- **Parent Drop Off:** Parents are asked to use the South Parking Lot and students may enter Door #4 at 9:00AM.
- **Walkers and Bike Riders:** These students may enter at Door #1 or #4 at 9:00AM.

Student Dismissal

Students are led out by School Patrols in orderly lines.

- **Adventures Plus:** Students that will be going to A+ after school will be led to the cafeteria.
- **Bike Riders:** may exit out door #3.
- **Bus Lines:** The line leaders for the buses will lead the students to the bus as their bus arrives.
- **Parent Pick-Up:** Students are led to Door#4. It is important that cars exit as soon as their children have been picked up.
- **Walkers:** ALL walking students must exit Door#4 at dismissal.

Parking Lot Safety and Procedures

Our goal is for safe and efficient drop off and pick up of your child.

- In the morning: You may start dropping off students at 9:00AM.
- In the afternoon: Students come out of the school shortly after our 3:45PM bell. Please wait in the car line and patiently pick up your children. This process can take about 10 minutes.
- Use the entire curb area for pick up and drop off. The first car in line should be all the way up to the garage.
- Do not get out of your driver's seat.
- Do not let your child cross the parking lot alone.
- Do not park on Flora Street and walk your child through the Flora Street entrance.